

CHAPTER ONE: GENERAL INTRODUCTION

1.1 Introduction

This chapter presents the general introduction of the 2026-2029 DMTDP. It encompasses the brief background of the Chereponi District Assembly, the vision, mission, functions, mandate, core values, organogram and location maps. It also provides a structure of the various chapters of the plan.

1.2 Background of the District

The Chereponi District was carved out of the then Chereponi-Saboba District, in October 2007, with an Executive Instrument (E.I.11). The Chereponi District was officially inaugurated on Friday February 29, 2008 with Chereponi as its capital.

The district is one of the six (6) administrative districts in the newly created North East Region and located between latitudes $10^{\circ} 10^1$ S and $10^{\circ} 20^1$ N eastwards and longitude $10^{\circ} 10^1$ N and $10^{\circ} 20^1$ S northwards. It shares boundaries with the Gushegu District to the West; Yunyoo-Nasuan District to the North; Saboba Districts to the South and South-West and The Republic of Togo to the East bordered by the River Oti. The district has a total land area of approximately 1,374.7sq km (2010 PHC).

The district had a total population of 87,176 in 2021. The projected population for 2025 is estimated to be 94,807 (2021 PHC) with the male being 42,834 and female 44,342 with an intercensal growth rate of 2.12 percent. The district's share of the total population of the North East Region is 13.2 percent. (2021 PHC)

1.3 Vision, Mission, Functions, Mandate, Core Values

Vision

A transformed, resilient, inclusive and economically vibrant Chereponi District where all citizens enjoy quality social services, gainful employment and improved standards of living.

Mission

To facilitate the sustainable mobilization of resources, development of social and economic infrastructure, and community-driven service delivery through transparent, accountable and participatory governance between 2026 and 2029.

Functions

The District Assembly is the highest Political and Administrative authority in the district. It has deliberative, legislative and executive powers. The Assembly's main statutory functions provided in Section 10 of Act 462 and the fourth schedule of its Establishment Instrument LI 2018 includes the following;

1. Be responsible for the overall development of the district
2. Formulates and execute plans, programmes and strategies for the effective mobilization of resources
3. Initiates programmes for the development of basic infrastructure and provides works and services in the district
4. Be responsible for the development, improvement and management of human settlement and environment in the district.
5. Promotes and supports productive activities
6. In collaboration with the appropriate national and local security agencies, be responsible for the maintenance of security and public safety in the district and;
7. Initiates, sponsors or carry out such duties as may be necessary for the discharge of any of the functions conferred by the Act

Core Values of the Chereponi District Assembly

The core values of the Chereponi District Assembly include the following:

- i. **Selflessness;** Assembly staff should take decisions solely in terms of the public interest. They should not do so in order to gain financial or other material benefits for themselves, their families or friends.
- ii. **Integrity;** Assembly staff should not place themselves under any financial or other obligations to any individual or organization that might influence them in the performance of their duties, including awarding of contracts.
- iii. **Just and Fairness;** In carrying out public business including making public appointments, awarding contracts or recommending individuals for rewards and benefits, officers should make choices based on merit solely.
- iv. **Accountability;** District Assembly staff should be responsible to both employer and public for their decisions and actions and must submit themselves to whatever scrutiny that is appropriate to their office and offence
- v. **Transparency;** Assembly staffs should be as open as possible about all their decisions and actions that they take. They should give reasons for their decisions and restrict access to information and release it only when the wider public interest clearly demands that the information should be released.
- vi. **Leadership;** Assembly staff should strive to excel in all their endeavors in order to be examples for others and encourage them to follow their footsteps

1.4 Organogram of the Chereponi District Assembly

The organogram of the Chereponi District Assembly has the District Chief Executive as the political head and seats on top of the organogram. District Coordinating Director serves as the

administrative head and the secretary to the assembly; the structure has the Executive Committee as the second highest decision-making body of the Assembly which is next to the general Assembly.

The Executive Committee consists of;

- The DCE as Chairperson
- The Chairpersons of the following Sub-Committees
 - Development Planning
 - Social Services
 - Works
 - Finance and Administration
 - Justice and Security
- The chairperson of one ad hoc Sub Committee
- Two other members elected by members of the District Assembly
- The DCD as the Secretary of the Executive Committee

The administration of the district is under the leadership of the District Chief Executive assisted by the District Coordinating Director and the technical departments. The departments of the Assembly are:

1. Central Administration
2. Disaster Prevention and Management
3. Agriculture
4. Education
5. Social Welfare and Community Development
6. Health
7. Works
8. Finance
9. Trade & Industry
10. Physical Planning
11. Human Resource

There are also agencies and organizations operating in the district including: Customs Excise and Preventive Service, Ghana Immigration Services and Commission for Human Rights and

Administrative Justice. They function independently from the district assembly, but also contributes in the development of the district.

Other Government Departments are;

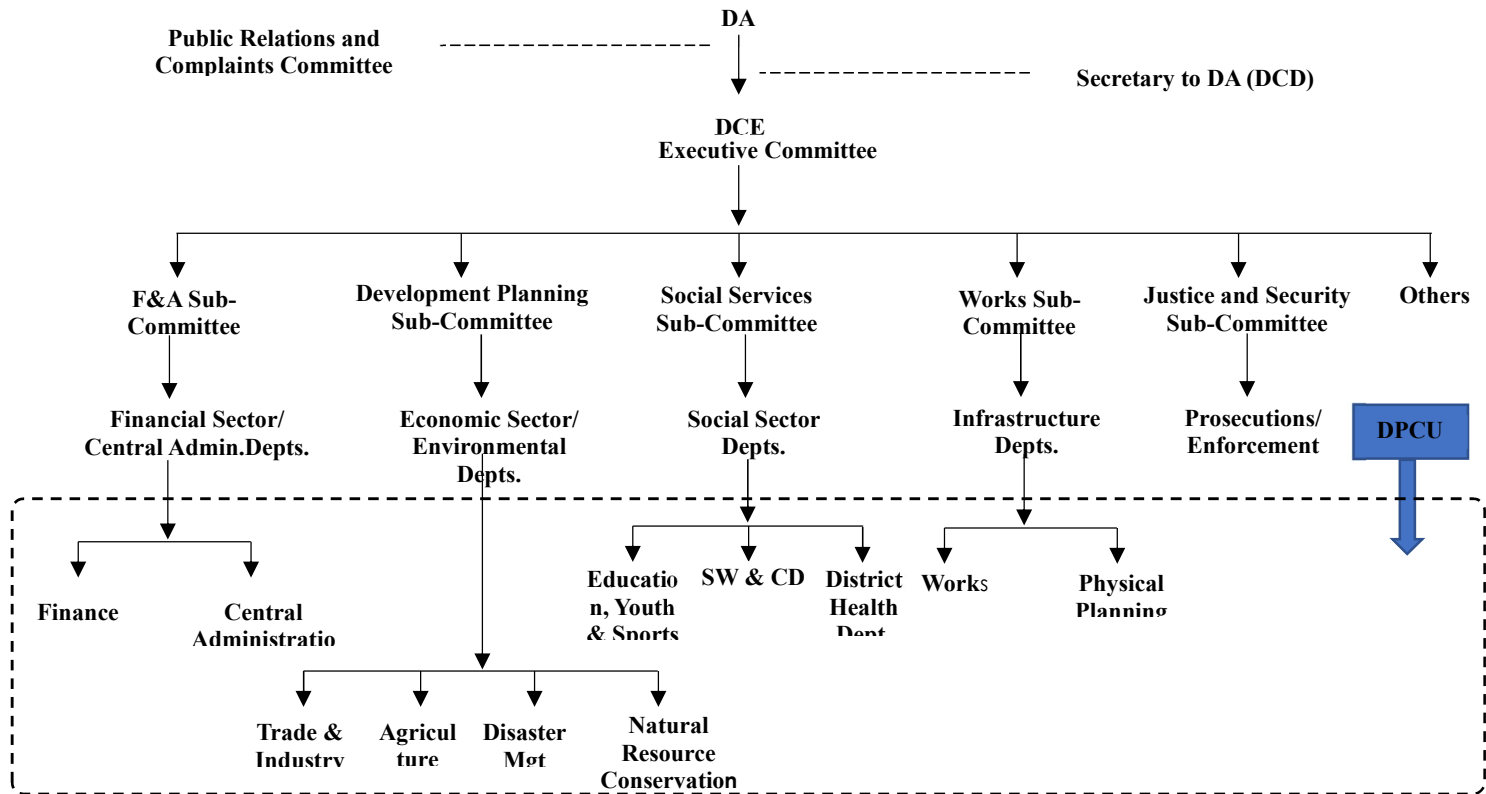
- Electoral Commission
- National Commission for Civic Education (NCCE)
- Information Service Department
- Ghana Police Service
- Non-Formal Education

Most of these departments face challenges such as; low staffing, poor office and residential accommodation. There are also numerous programmes on-going in the district. These programs include LEAP, School Feeding, National Functional Literacy Program (NFLP) and National Youth Employment Program.

They are also a number of NGOs that work in the district as well. Some of the NGOs include SEND-Ghana, Campaign for Female Education (CAMFED), Evangelical Presbyterian Development and Relief Agency (EPDRA), Research Triangle International (RTI), School for Life, Action-Aid, CSSM, NORSAAC and North Eastern Corridor Integrated Development Agency (NECIDA). These NGOs work alongside the assembly to further the development in sectors of Health, Education, Agriculture, and help in the building of infrastructure.

The organogram of the Chereponi District Assembly is presented in fig. 1.1 below:

FIGURE 1.1: CHEREPONI DISTRICT ASSEMBLY ORGANOGRAM



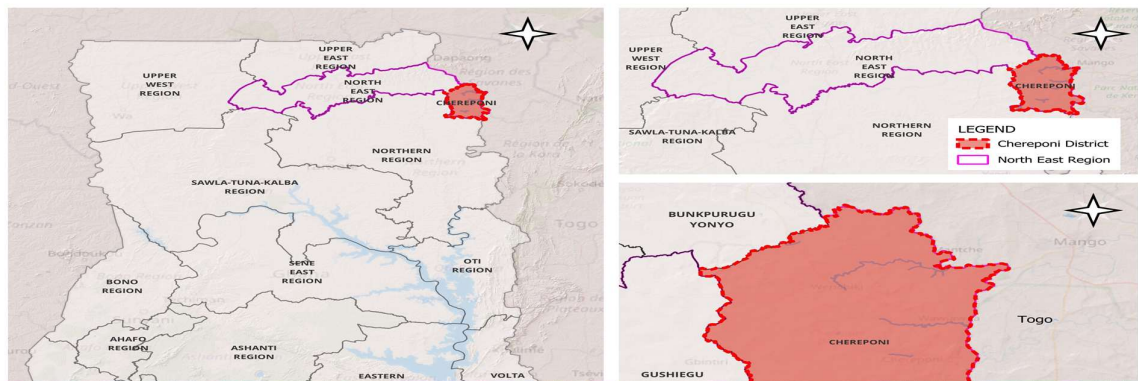
1.5: Location Maps: Geographical Context and Administrative Structure Maps

Understanding the geographical location and administrative framework of Chereponi District is fundamental to analyzing its socio-economic landscape. The figure 1.2 below illustrates its position within Ghana and its internal divisions

The context map (Figure 1.2) provides a multi-layered view of Chereponi District's location. The main map of Ghana clearly demarcates the various regions, highlighting the North East Region. Within this region, Chereponi District is prominently marked, situated in the northeastern corner and sharing a strategic international border with Togo to the east. This border location has significant implications for trade, migration, and cross-border relations.

The insert maps offer a more granular perspective, detailing its immediate neighbors: Yunyoo-Nasuan District to the northwest, Gushiegu District to the southwest, and Saboba District to the south. This geographical positioning influences regional transport routes, economic integration, and the shared use of resources and services with neighboring administrative areas.

FIG. 1.2: LOCATION OF CHEREPONI DISTRICT WITHIN THE NORTH EAST REGION AND GHANA



The administrative map (Figure 1.3) below reveals that Chereponi District is subdivided into five and one Area and Town Council respectively, which form the second tier of local government essential for grassroots governance and service delivery. The area and town councils are Wenchiki, Tambong, Nansoni, Tombo, Wonjuga, and Chereponi (the district capital) respectively. The district capital is centrally located, facilitating access from the various area councils.

FIG. 1.3: ADMINISTRATIVE DIVISIONS (AREA COUNCILS) OF CHEREPONI DISTRICT

